

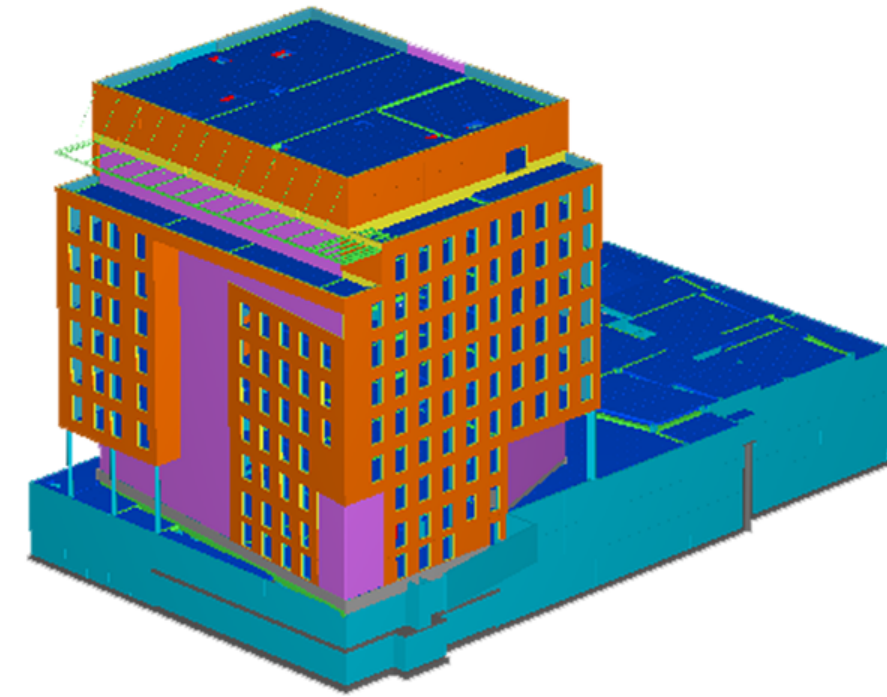


oneclicklca.com

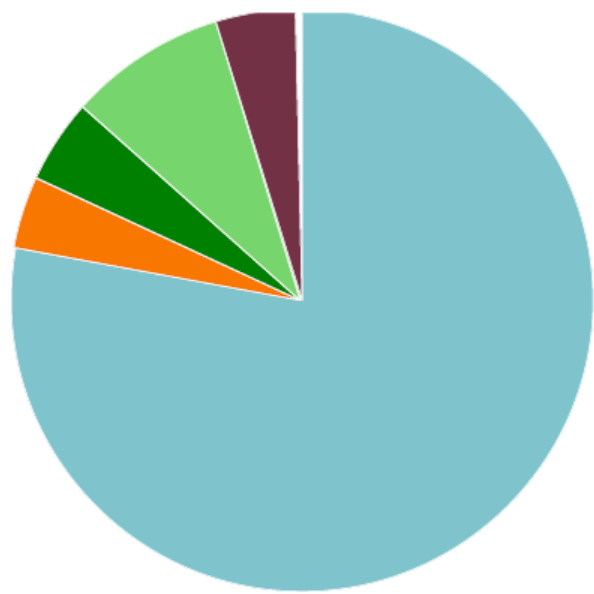


2.3 ton carbon

368 kg CO₂/m²

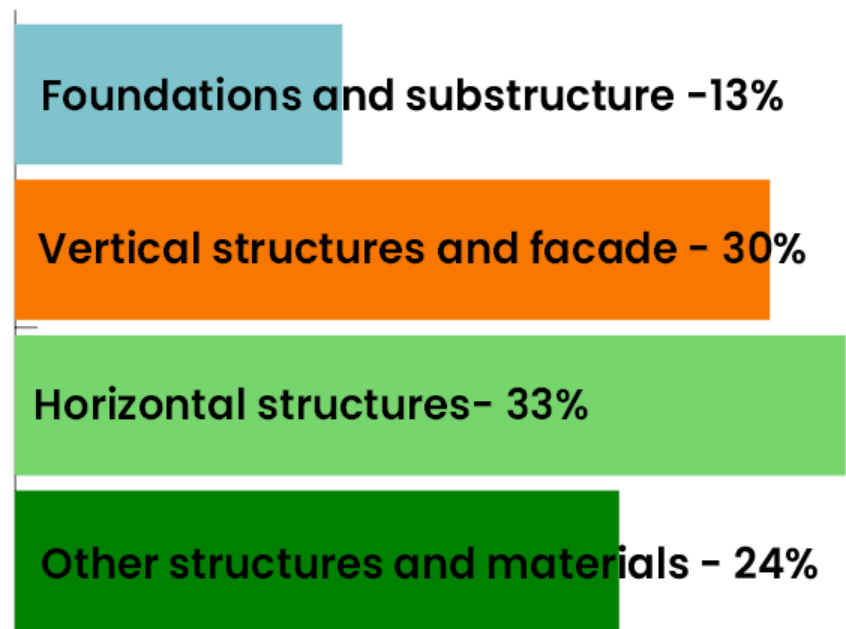


By life-cycle stage



- A1-A3 Materials - 77.9%
- A4 Transportation - 4.0%
- A5 Construction - 4.7%
- B4-B5 Replacement - 8.7%
- C1-C4 End of life - 4.7%

By structures



Benchmark with other projects

Cradle to grave (A1-A4, B4-B5, C1-C4)	kg CO ₂ /m ²
(< 220) A	
(220-316) B	
(316-412) C	368
(412-508) D	
(508-604) E	
(604-700) F	
(>700) G	